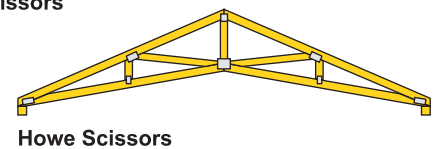
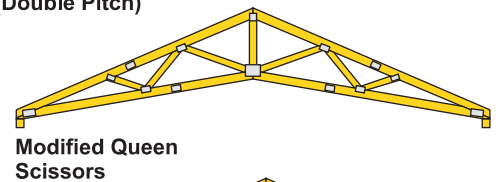
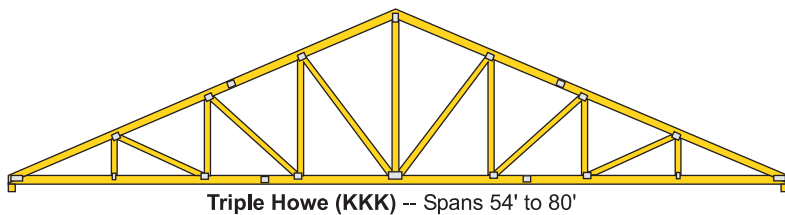
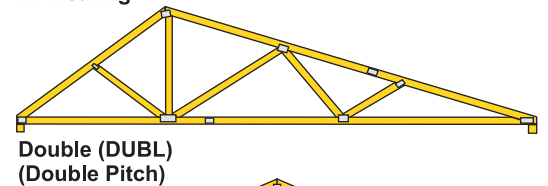
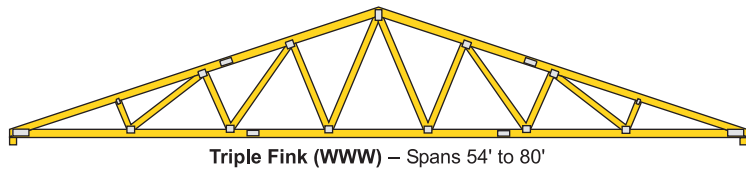
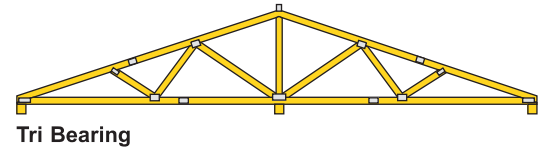
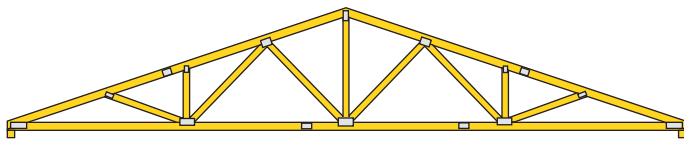
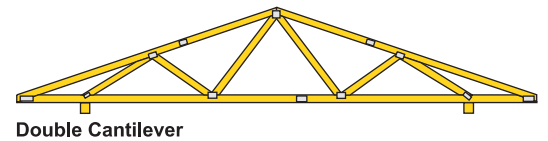
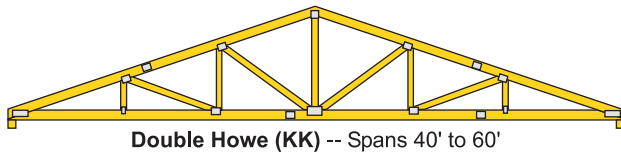
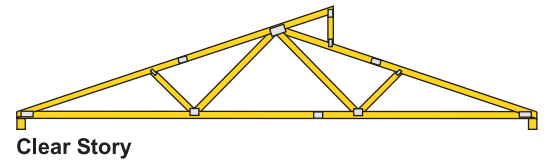
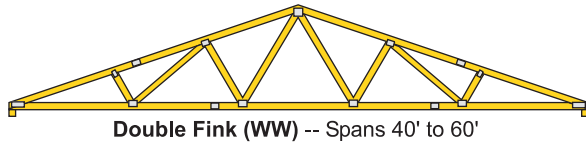
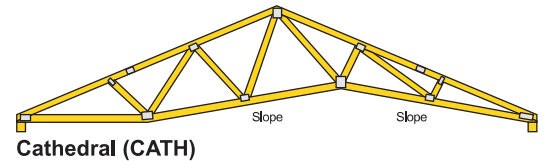
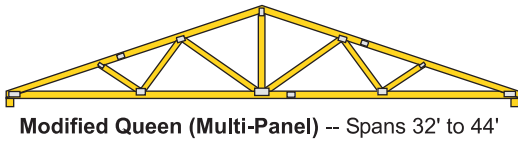
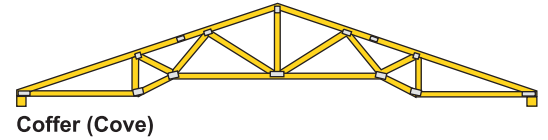
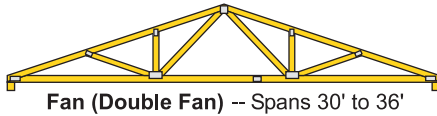
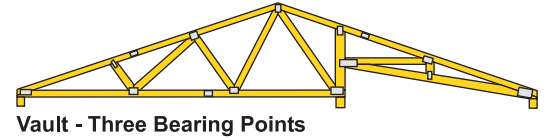
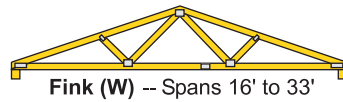
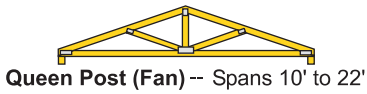
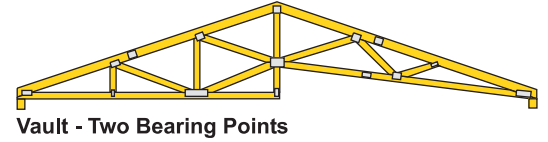
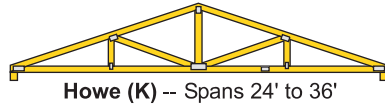
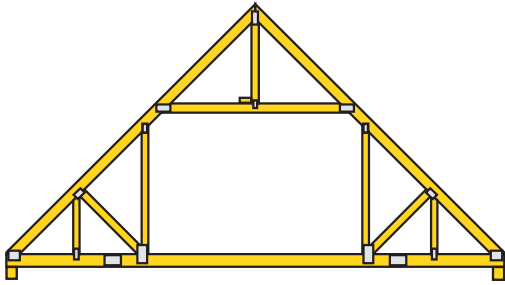
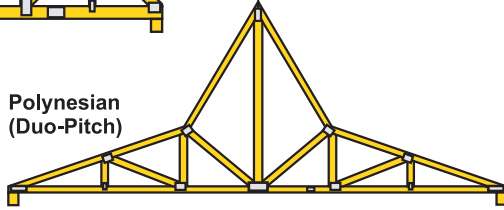


## TRUSS CONFIGURATION

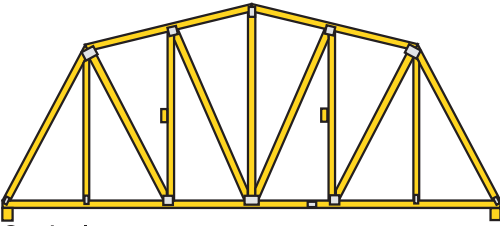




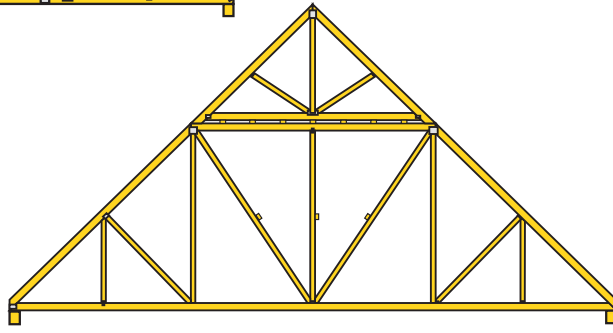
Room-In-Attic



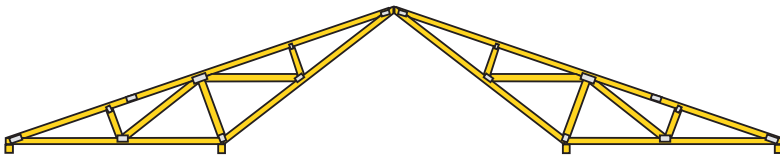
Polynesian  
(Duo-Pitch)



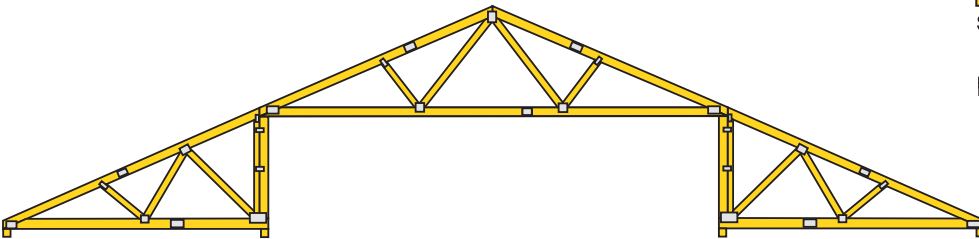
Gambrel



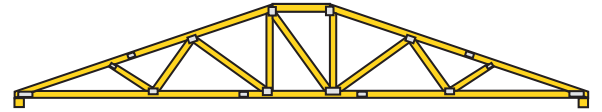
Piggyback



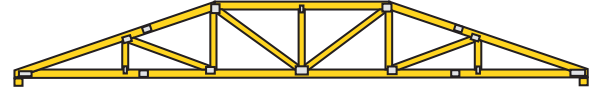
Double Inverted -- Lengths 50' to 80'



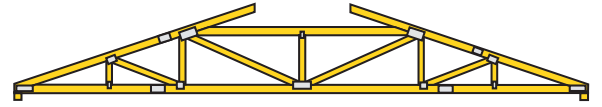
Three Piece Raised Center Bay -- Lengths 50' to 100'+



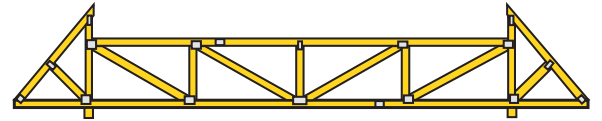
Steardown Hip



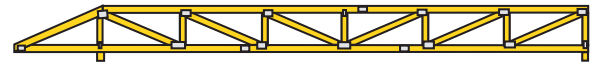
Hip Girder



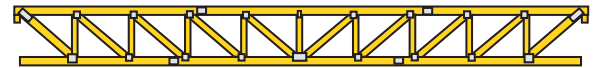
California Hip



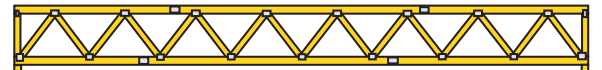
Double Cantilever With Parapets



Flat Truss With Cantilever (Pratt Configuration)



Top Chord Bearing Flat Truss (Pratt Configuration)



Flat Truss (Warren Configuration)



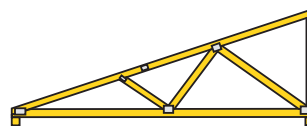
Sloping Parallel Chords (Howe Configuration)



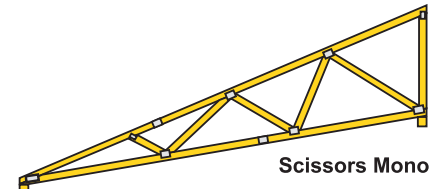
Sloping Top Chord (Howe Configuration)



Floor Truss (System 42 - Modified Warren Configuration)



Mono



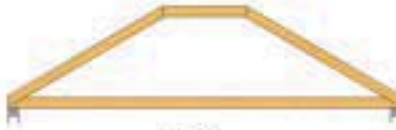
Scissors Mono

## TRUSS SHAPES

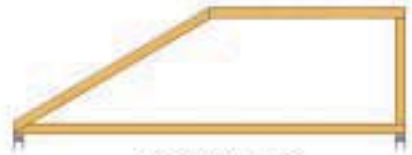
The outside profile of your truss can take on just about any shape you can imagine.  
Some of the more common truss shapes appear below.



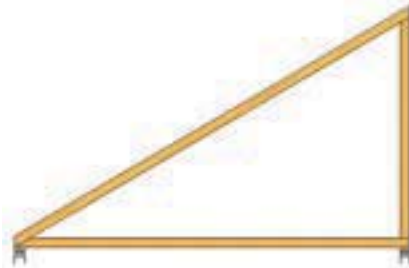
COMMON



HIP



MONO HIP



MONO



MONO SCISSORS



SLOPING FLAT



SCISSORS



HIP SCISSORS



VAULT



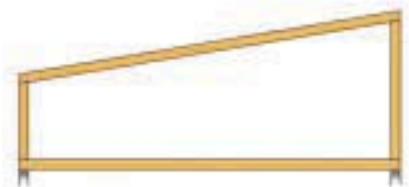
GAMBREL



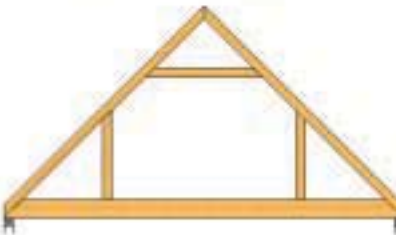
DOUBLE PITCH



FLAT



PITCHED FLAT



ATTIC



PORCH



CAMBER



POLYNESIAN HIP



SY42 FLOOR